



스마트21
T10 사용설명서

1.	- 3 -
2.	- 4 -
2.1	- 4 -
2.2	5
2.2.1	6
2.2.2	7
2.2.3	- 10 -
2.2.4	- 11 -
2.2.5	- 13 -
2.2.6	- 14 -
3.	- 15 -
4. USB	- 15 -
4.1	- 15 -
4.2	- 15 -
5.	- 16 -
6.	- 18 -
7.	- 18 -
8.	:	- 20 -
8.1	- 20 -
8.2	- 22 -

1.

- 1. LVDS LCD CPU A9
1G, : 256M DDR3 1600M
(
1 ~2).
- 2. USB , 10M/S , 8G (7.1G
)
- 3. 90 가
() 90, 180, 270 .
- 4. , , ,

2.

2.1

() :



:

, on/off

:

:



:

3



:

3



/



:



:



:



:



:

MENU:

,

VOL+:

VOL-:



:

,



:

,

EXIT:

가

DEL:

가

2.2

:



2.2.1



1. :
:
:
:
:
5 ; MENU
가 .
2. :
USB , 30
가 .
3. :
:
: banner.png
: 280x100
:
USB

4. :

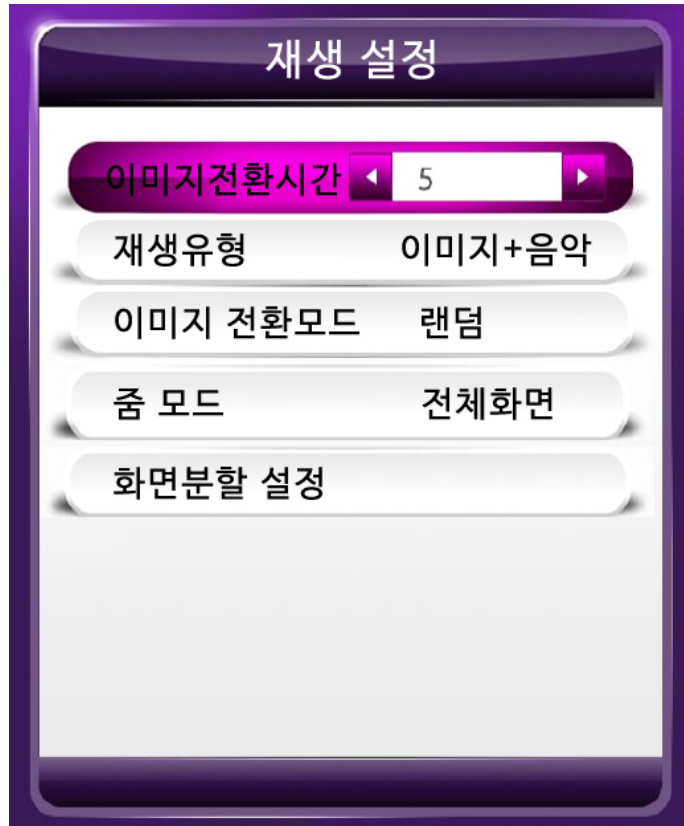
3

3

5. :

MENU

2.2.2



1. :

3-59

2. :

3. :

4. :

가

5.



split
4 가 가 ,
video
5 image1, image2, image3, image4,
image5
가
가

SPLITSCREEN.TXT

- 1: SPLIT_MODE1.TXT
 - SPLIT_MODE1_FRAME.png(1)
 - SPLIT_MODE1)SAMPLE.png(1)
- 2: SPLIT_MODE2.TXT
 - SPLIT_MODE2_FRAME.png(2)
 - SPLIT_MODE2_SAMPLE.png(2)

3: SPLIT_MODE3.TXT

SPLIT_MODE3_FRAME.png(3)

SPLIT_MODE3_SAMPLE.png(3)

4: SPLIT_MODE4.TXT

SPLIT_MODE4_FRAME.png(4)

SPLIT_MODE4_SAMPLE.png(4)

:

(SPLIT_MODE1_SAMPLE.Png...), 250*150

150*250

.

.

:

.

,

.

.

:

,

,

split

split1

split99

split

100

2.2.3



1. on/off: on/off
2. :
3. : , , 가
4. :
5. :

2.2.4



1. : MENU ()



2. : on/off
 3.on/Off : 3 on/off , ()



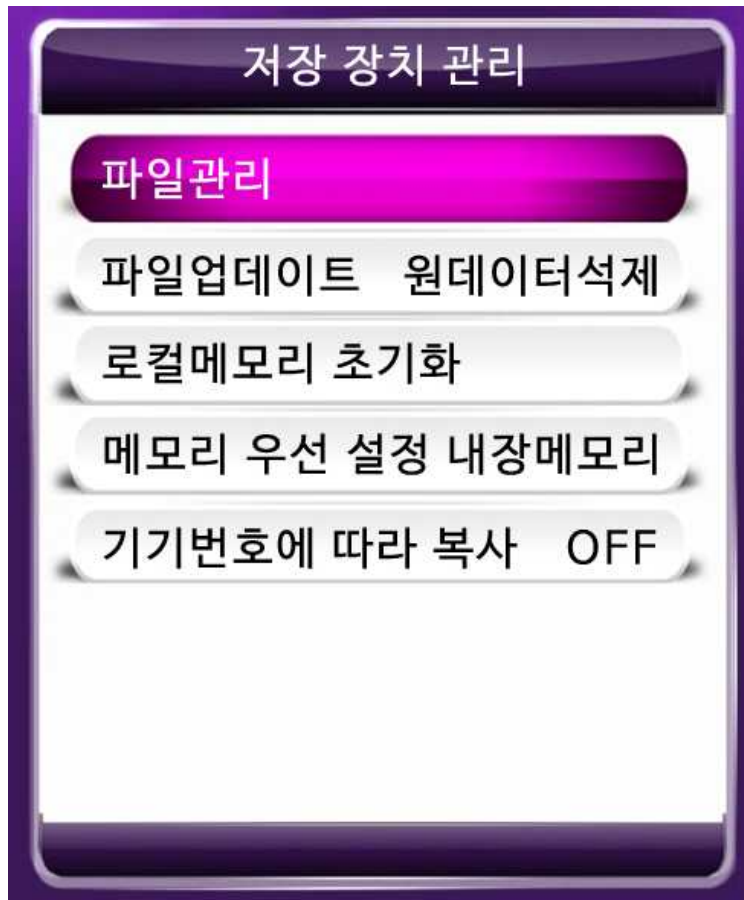
- a. : on/off
 - b. :
 - c. :
- (: , 3 .)

2.2.5



1. : USB 가 USB menu_bg_h.jpg , menu_bg_v.jpg() MENU ,
2. :
3. :
4. :
5. :
6. :
7. : MENU

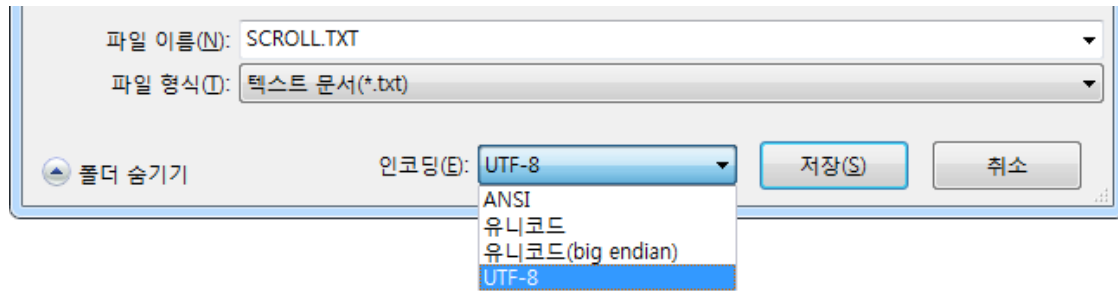
2.2.6



1. :
 2. :
 3. :
 4. : USB USB
 5. : USB USB
- 00001 : 가 00001, USB

3.

SCROLL.TXT (->
-> ()) ,
450 (Enter) ,
UTF-8 .



4.USB

4.1

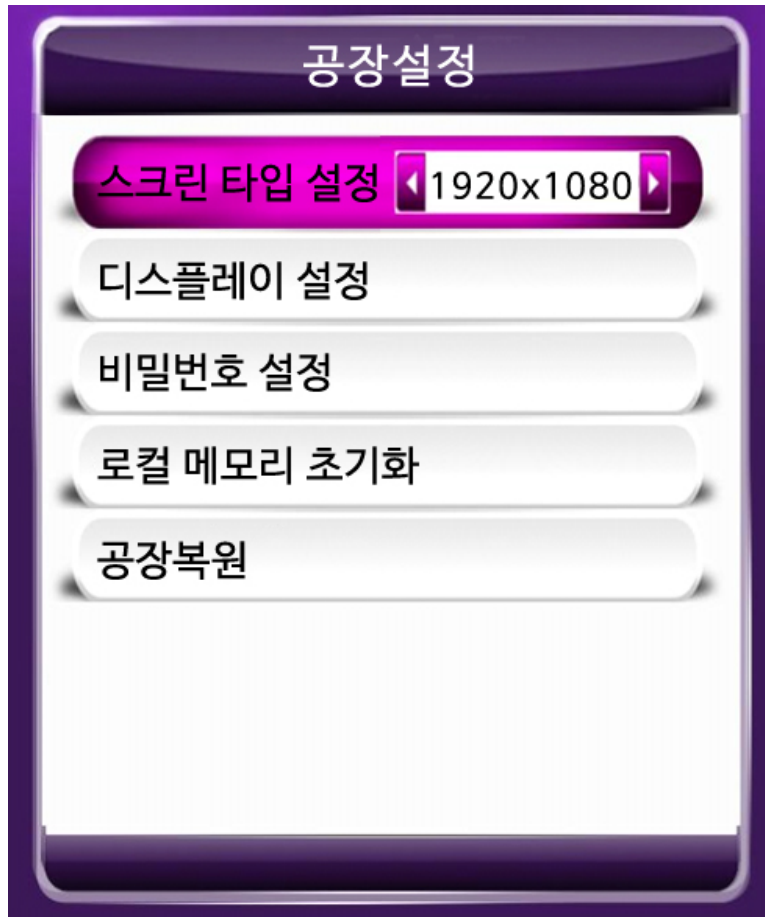
8G (가 7.3G) , USB
,
USB , USB
,
USB

4.2

, ,
() ! @ # \$ % ^ _ - + = , ASCII
, 가 (0-9), , ,
, () 45
(22 45 ,).

5.

MENU 가
DEL 5



1. :

2.



3.

3
USB 가

4.

(25 가)

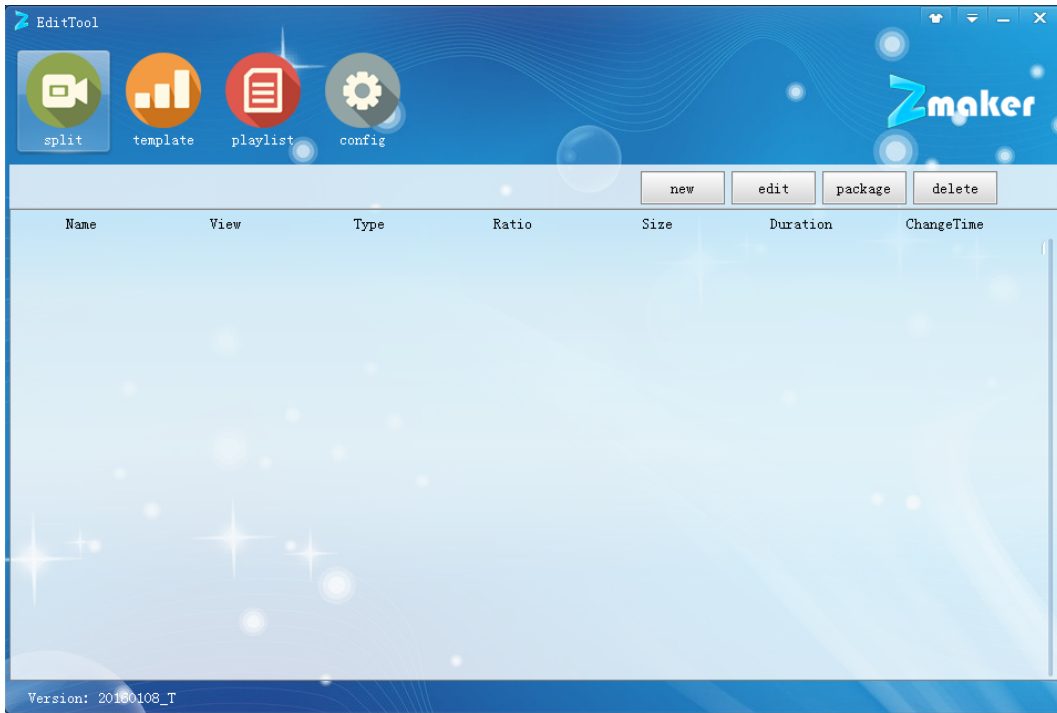
AVI	Mpeg4 Divx3,4,5,6 H264	1920*1080	25fps	18M/s	Mp2,Mp3 Aac,Ac3, P c m
DAT	Mpeg1,2	1920*1080	25fps	18M/s	Mp2,Mp3
VOB	Mpeg1,2	1920*1080	25fps	18M/s	Mp2,Mp3
3GP	Mpeg4 Divx3,4,5,6 H264	1920*1080	25fps	18M/s	Mp2,Mp3 Aac,Ac3, P c m
MKV	Mpeg4 Divx3,4,56 H264	1920*1080	25fps	18M/s	Mp2,Mp3 Aac,Ac3, P c m
MOV	Mpeg4 Divx3,4,56 H264	1920*1080	25fps	18M/s	Mp2,Mp3 Aac,Ac3, P c m
MP4	Mpeg4 Divx3,4,56 H264	1920*1080	25fps	18M/s	Mp2,Mp3 Aac,Ac3, P c m
FLV	H264	1920*1080	25fps	18M/s	Mp2,Mp3 Aac,Ac3, P c m
MPG	Mpeg1,2	1920*1080	25fps	18M/s	Mp2,Mp3 Aac,Ac3, P c m

: 1920*1080 20m/s ,
가 16m/s

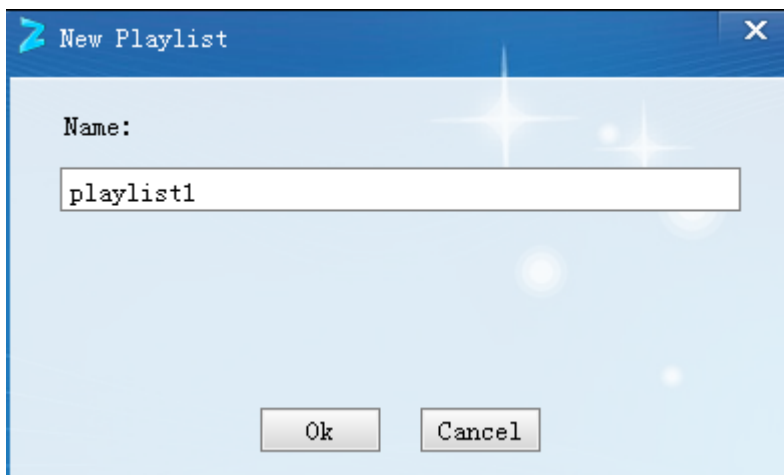
8. :

8.1

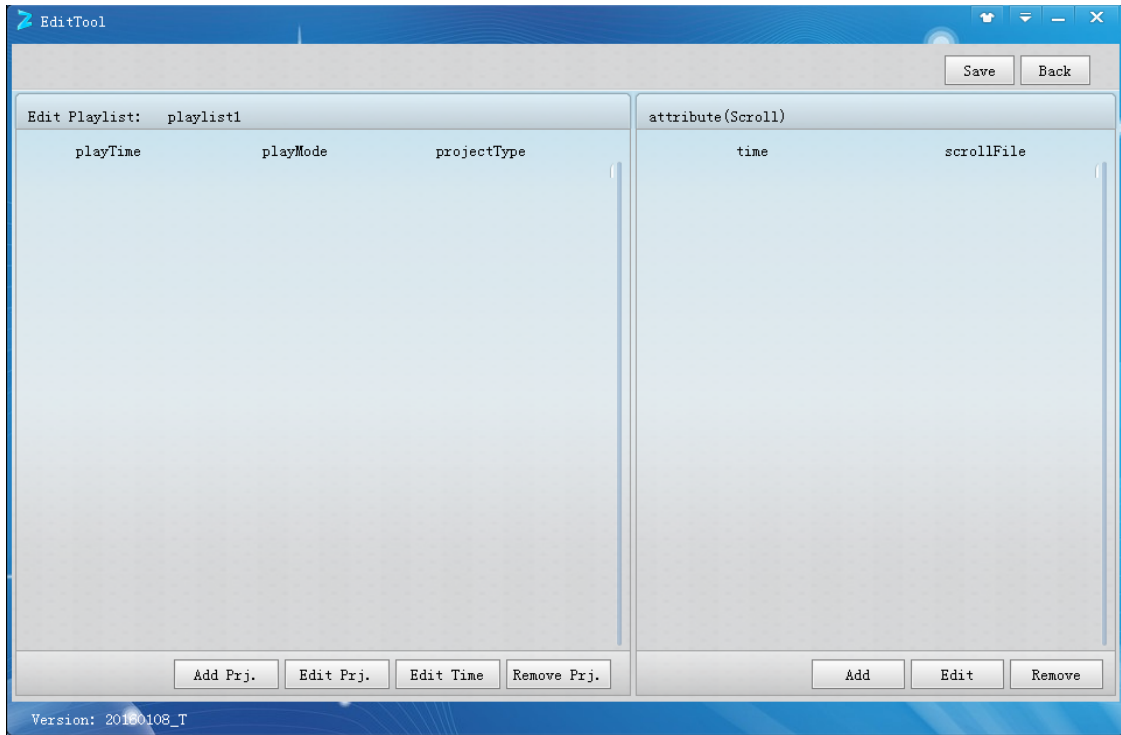
()



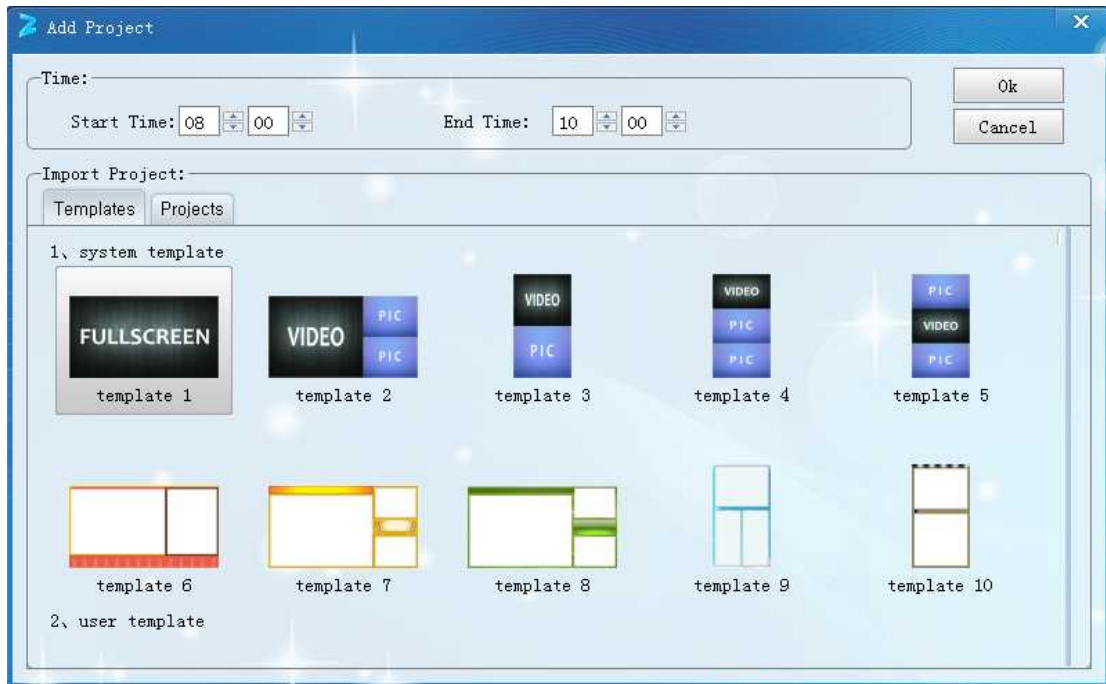
, “ ”
” ” , 가



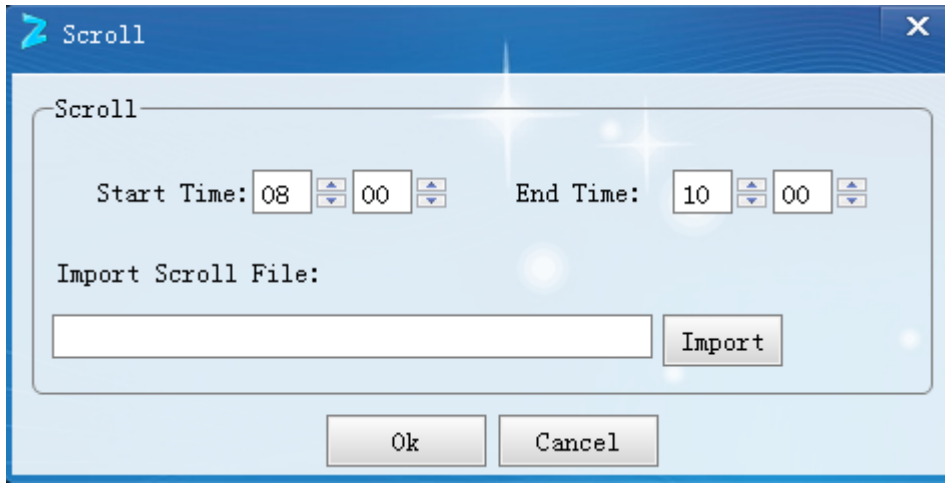
:



“ 가”



가
가():

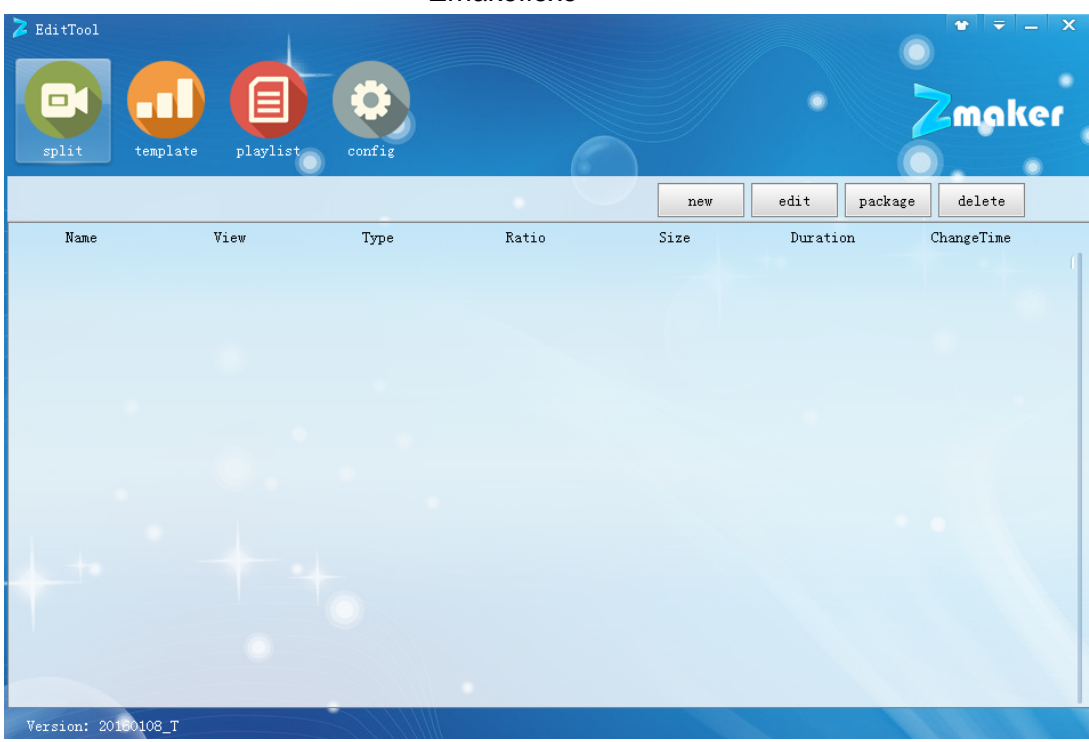


txt 가
UTF-8

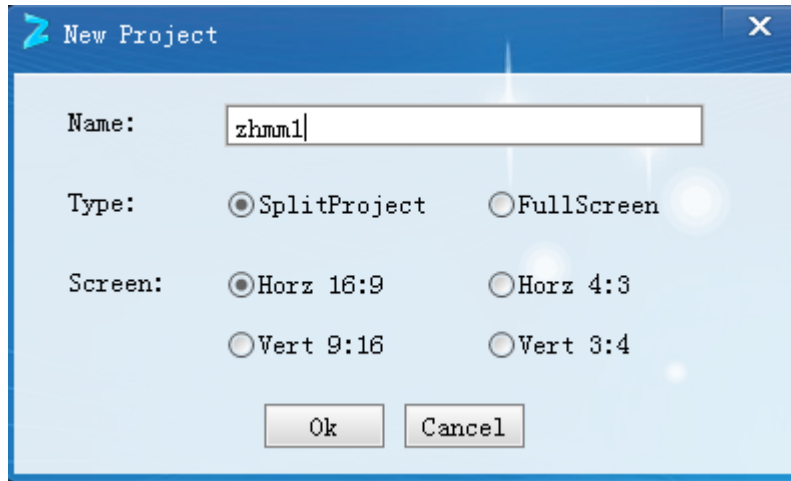
playlist1, USB

8.2

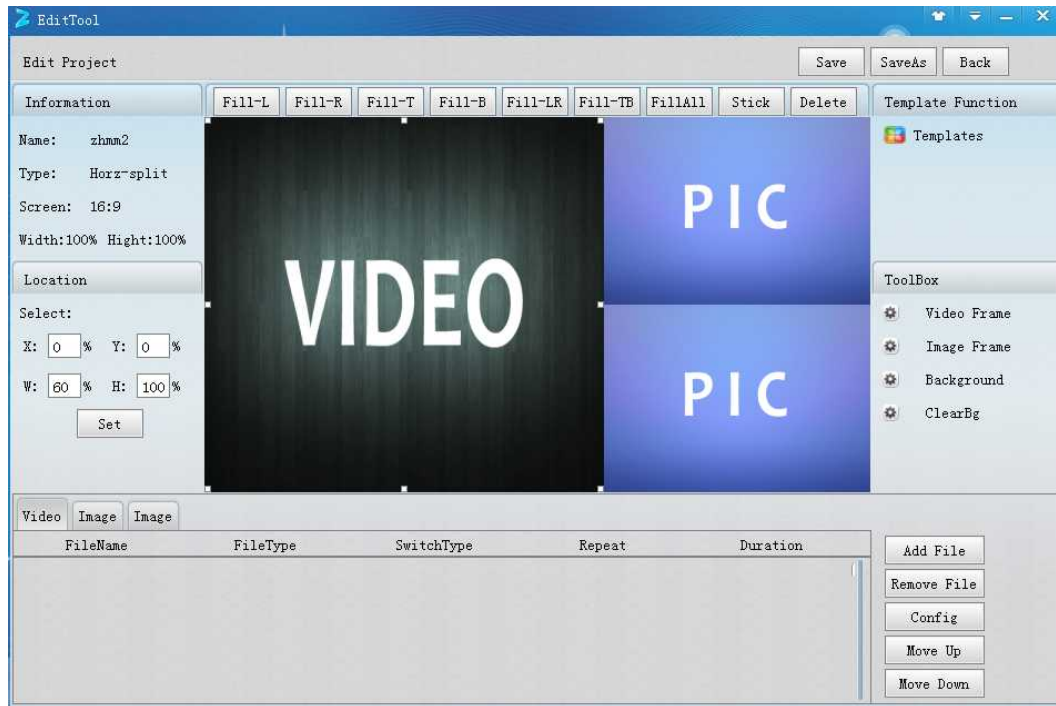
Zmaker.exe



“ ”
“ ” “ ”
가 가
“ ”



가 16:9



: ,
 : ,
 :
 :
 : X, Y
 " "

“ 가”

가 ,

“ ”

가 “ ” ,
TXT split , split USB
USB .
 . (: split
).